

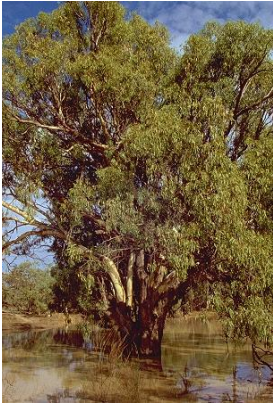


BIOS1101 Evolutionary & Functional Biology

Session: 2 **UOC: 6** **Hrs/Week: 5**

Staff Contact: Associate Prof. Michel Beal

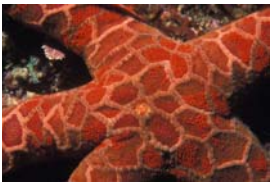
m.beal@unsw.edu.au



Why do this course?

BIOS1101 is a course for anybody with an interest in the natural world. Biological Science is the study of plants and animals in all their forms. Including their origin, development, functioning and evolution of living systems and how they inter-relate.

By undertaking the course you will gain a greater appreciation and knowledge of the animals and plants around you. You will get exciting and groundbreaking teaching from experts in zoology & paleontology (Prof. Michael Archer, Dean of Science at UNSW); botany (Dr Geoff Hyde); animal physiology and development (A/Prof. Mike Beal).



What degree would this course be useful for?

If you have an interest in: Anatomy, Biochemistry, Biological Science, Biotechnology, Botany, Ecology, Environmental Science, Genetics, Immunology, Marine Biology, Microbiology, Molecular Biology, Pharmacology, Physiology, Spatial Information Systems, Toxicology or Zoology – then BIOS1101 is recommended for you.

Of course, if you are doing other science disciplines or degrees from other faculties, BIOS1101 may often still be taken as an elective course.



What will I be studying?

The course examines many diverse areas including:

- evolutionary history of life on earth from the origins of life to humans.
- relationships between environment, adaptation and function, with an emphasis placed on adaptation in the Australian biota.
- animal and plant physiology



Where do I go for additional information about BIOS1101?

You can find out more about BIOS1101 and other courses offered by the School of Biological, Earth and Environmental Sciences at:

Room G27, Biological Sciences Building

Ph: 93852015/ 93852961

E: beesinfo@unsw.edu.au

www.bees.unsw.edu.au

